

SCOTTSDALE AIRPARK

FOR LEASE 11,199± SF

CONTEMPORARY SINGLE-STORY OFFICE/WAREHOUSE BUILDING



BEAUTIFUL CONTEMPORARY
INTERIOR!

15354 N 83rd Way | Scottsdale, Arizona 85260

FOR MORE INFORMATION PLEASE CONTACT:



RANDY SHELL
Designated Broker
randy@shellcommercial.com
C 480.694.4100



AMANDA WRIGHT
Senior Associate
amanda@shellcommercial.com
C 480.236.0037

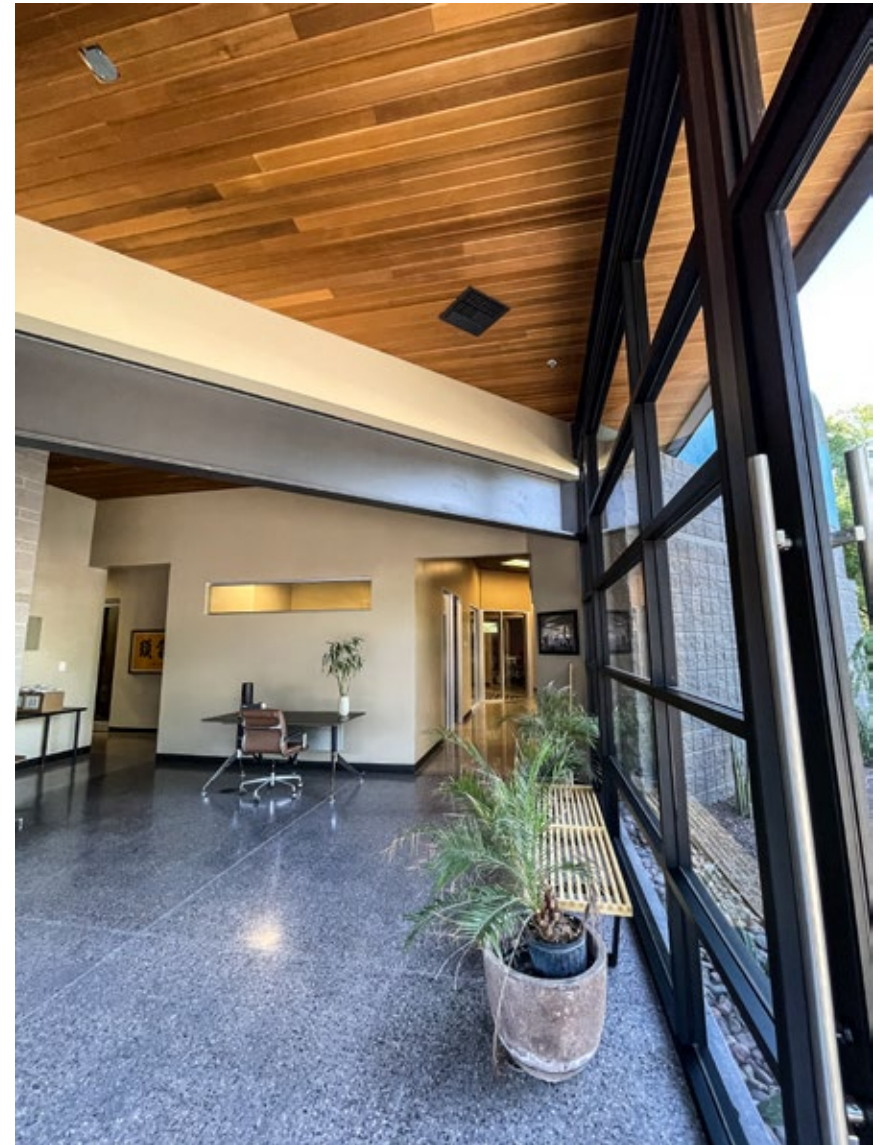
Office Phone:
480.443.3992
shellcommercial.com

 **SHELL**
Commercial Investment Real Estate
16410 N 91st St | Suite 112
Scottsdale, AZ 85260

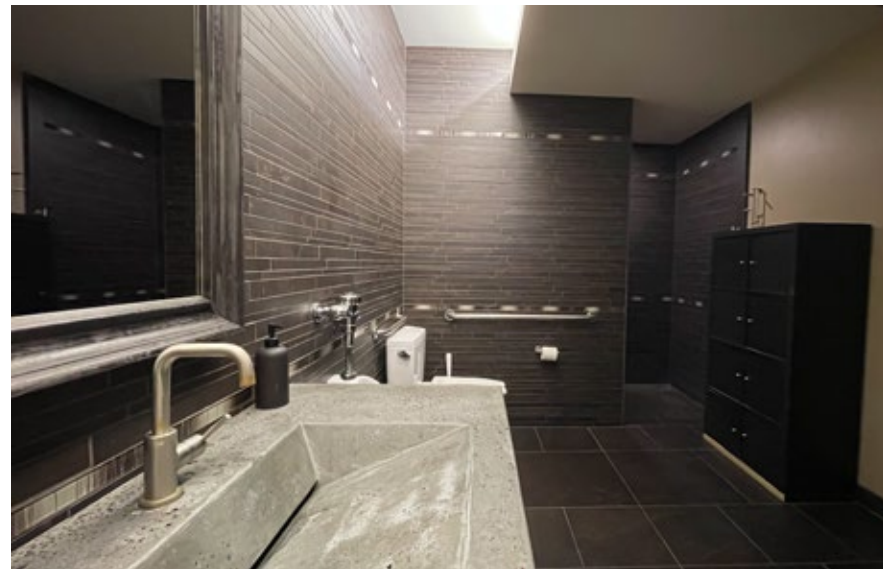
All information contained herein is subject to prior sales and leasing. This information has been secured from sources we believe to be reliable, but we make no representation or warranties, expressed or implied, as to the accuracy of this information.

PRIME LOCATION IN THE HEART OF THE SCOTTSDALE AIRPARK!

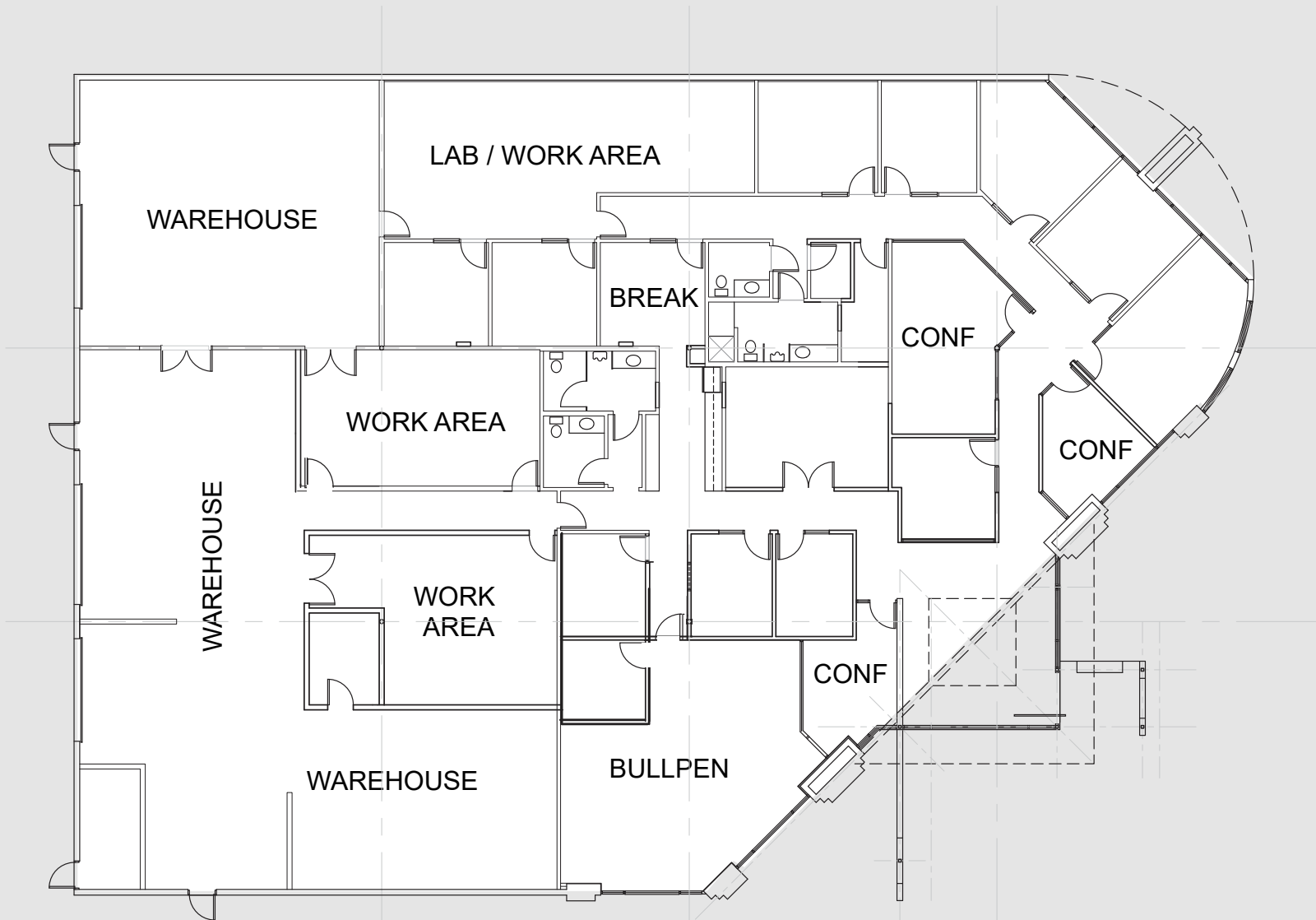
- Size:** ±11,199 sf single story office warehouse building
(approximately ±5,289sf office/±5,910sf warehouse)
(SEE EXISTING AS-BUILT & SPEC FLOOR PLANS)
- Rate:** \$1.70/sf/month NNN
- Features:**
- Built 2000
 - Stunning renovations completed December 2017 with contemporary upgraded finishes throughout
 - Lobby with floor to ceiling glass
 - Multiple private offices
 - Multiple restrooms Including one (1) shower
 - Three (3) conference rooms
 - Kitchen and break room area
 - Fully sprinklered
 - Fully air-conditioned warehouses
 - Masonry construction
 - Two (2) 12'x14' rollup garage doors
 - One (1) 12'x10" rollup garage door
 - ±17' ceiling height in warehouses
- Power:** · 3-phase - 1200 amps - 208Y/120V
- Zoning:** I-1, City of Scottsdale





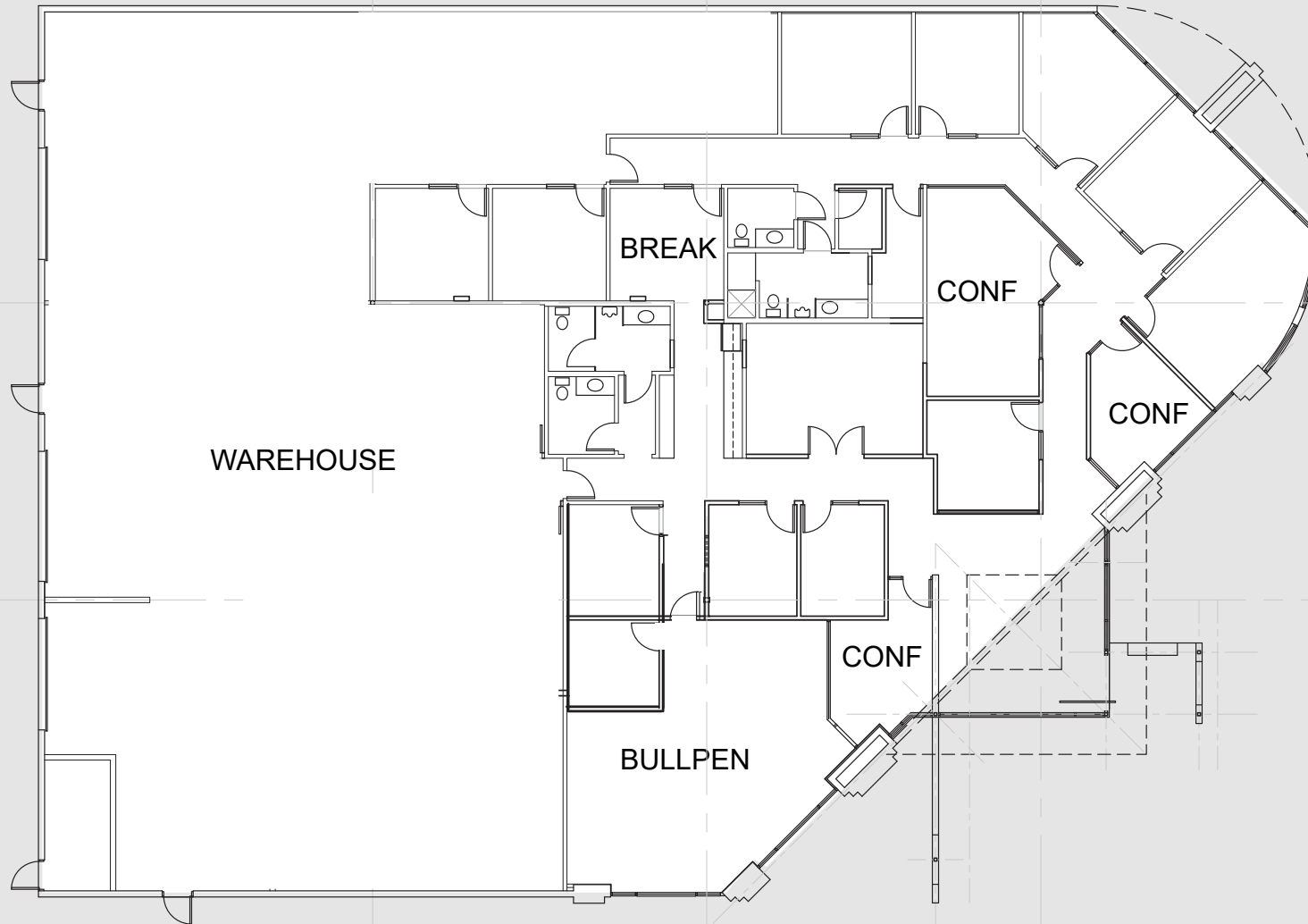


AS-BUILT FLOOR PLAN



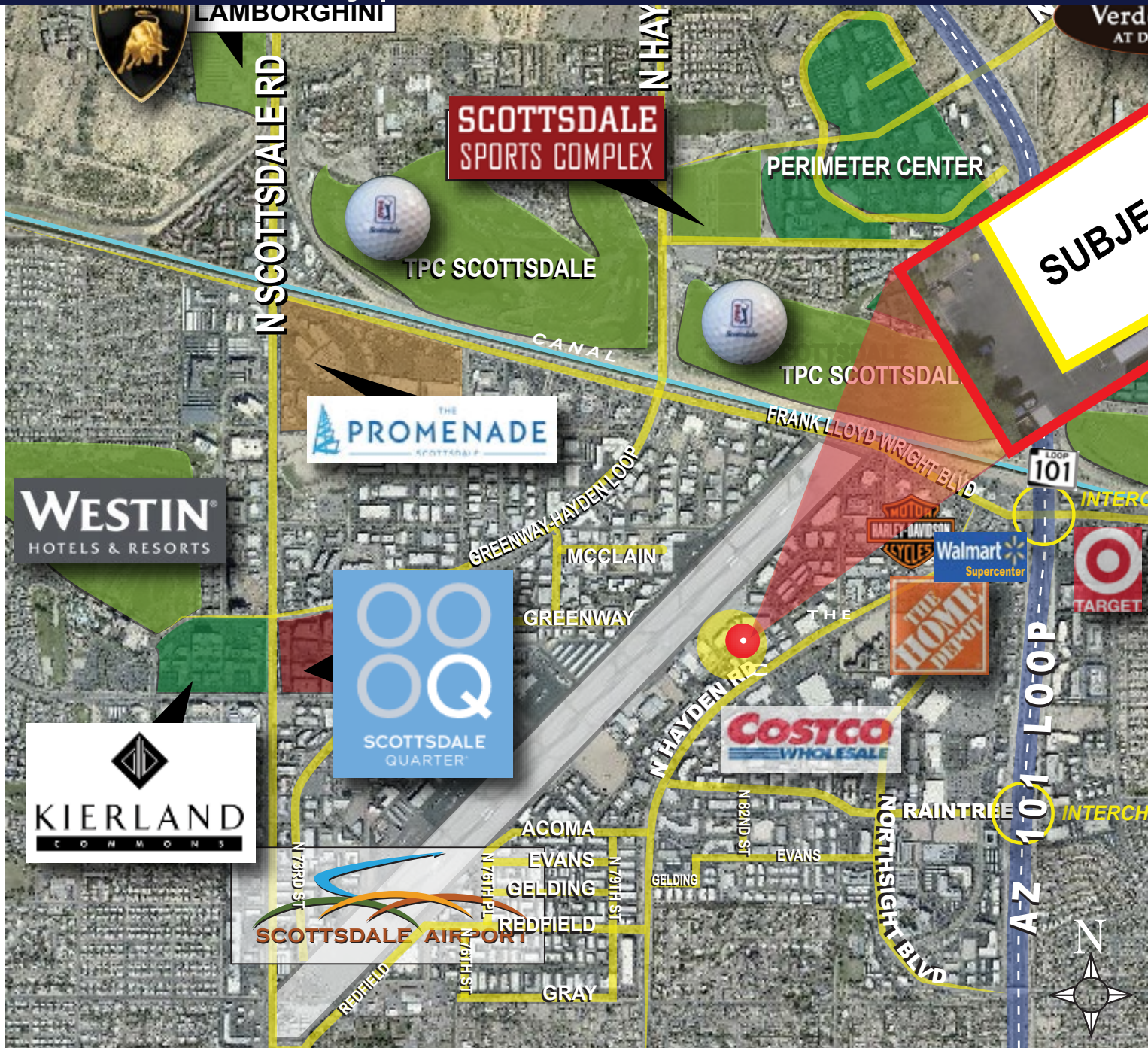
FLOOR PLAN

SPEC FLOOR PLAN



FLOOR PLAN

15354 N 83rd Way | Scottsdale, Arizona 85260



- Easy access to Loop 101 Freeway on-ramp/off-ramp at Raintree Drive
- Surrounded by North Scottsdale's finest amenities and shopping destinations, including Scottsdale Quarter, Kierland Commons, and the Scottsdale